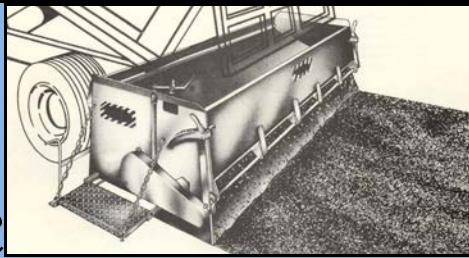


MACNAY cc



P.O.BOX 12361, ELSPARK, 1418
CARNIVAL INDUSTRIAL PARK
COERT STEYNBERG ST.
UNIT 28 & 29
DALPARK
TEL: 082-9003992
FAX: (011) 824-5268
E-MAIL: macnay@mweb.co.za
WEB: macnay.co.za

REG NO: CK86-11990-23
VAT NO: 4160105336

MECHANICAL TOW-TYPE CHIPSPREADER MODEL L12

MANUAL FOR:

WORKSHOP

OPERATOR

SPARE PARTS

MACNAY WARRANTY

Macnay warrants all its equipment to be free from defects in material and workmanship, for a period of three (3) months, commencing from the date of collection / delivery.

This warranty covers all components or parts of the equipment, provided that the equipment was used as per specifications and operated under normal working conditions.

On receipt of such defective parts and proven to Macnay's satisfaction to be defective, only then will such items be repaired or replaced without cost to the purchaser.

Macnay accepts no responsibility for any charges or liabilities for loss of product, time or any other consequential damages arising from improper use or operation of the equipment beyond rated capacity.

This warranty will be void when substitute parts are used or modifications and or alterations are made or extras are added to the equipment, which are not supplied or conducted by Macnay.

Macnay does not authorize any person or party other than those authorized in writing to assume repairs or modifications or to change this warranty in any form nor to grant any other warranty on Macnay's behalf.

INTRODUCTION

The chipsreader is capable of spreading gravel, sand and chips, in various thickness, from 0 to 38mm. Every unit is supplied with one truck hitch which must be fitted to the tipper truck chassis by the customer. Additional truck hitches are available from our stores.

HOW IT OPERATES

1. The truck hitch must be fitted to the truck as per enclosed instructions.
2. Back truck up to the chipsreader.
3. The assistant ensures that the center hitch is engaged to the truck hitch. The center hitch is controlled by a swivel type handle, supported and operated from the side of the spreader. The controls on the side ensure that the operator does not have to get between the truck and chipsreader.
4. If required, fit blanking-off plates to adjust spreading width.
5. Remove both ballast box covers and after filling with chips replace both covers.
6. Couple both stabilizer chains to the truck.
7. Gearbox must now be engaged.
8. Set required feedgate opening
9. The unit is now ready for operation.

NOTE:

Three blanking-off plates are supplied with the unit to adjust spreading width.

COMPRISES OF:

The chipsreader comprises of eight road wheels:

- three idler wheels
- three traction wheels
- two balancing wheels

Power is transmitted from the traction wheels to the gearbox which has the settings:

- forward
- neutral
- reverse

On the gearbox, the output shaft is fitted with a sprocket which is chain-coupled to the sprocket on the feed roller. Drive is now transferred through the feed roller to the sprocket on the other side where it is also chain-coupled to the sprocket of the auger shaft.

When in operation the spiral grooves on the feed roller ensures even and constant feeding through the selected feed gate opening.

The augers are left and right hand, spiraled from the center to ensure that the material is evenly spread in the hopper.

Two operators platforms are fitted, one on either side of the unit.

OPTIONAL:

A full width removable operators platform is available.

MAINTENANCE

The following suggestions are forwarded for your assistance:

1. Ensure all tyres are inflated to 4,2 bar.
2. Check the drive chains weekly for proper adjustment.
3. Check and oil feedgate shaft bushes weekly.
4. Remove auger center bearing strap and grease center bearing once a month.
5. Drain the transmission box twice a year and refill with 5litre SAE 90 transmission oil.
6. Lubricate all bearings one a week.

Always use a hand grease gun with a high-grade anti-friction bearing grease.

OPERATORS INSTRUCTION

Before coupling spreader to the tipper truck ensure the following important steps have been taken:

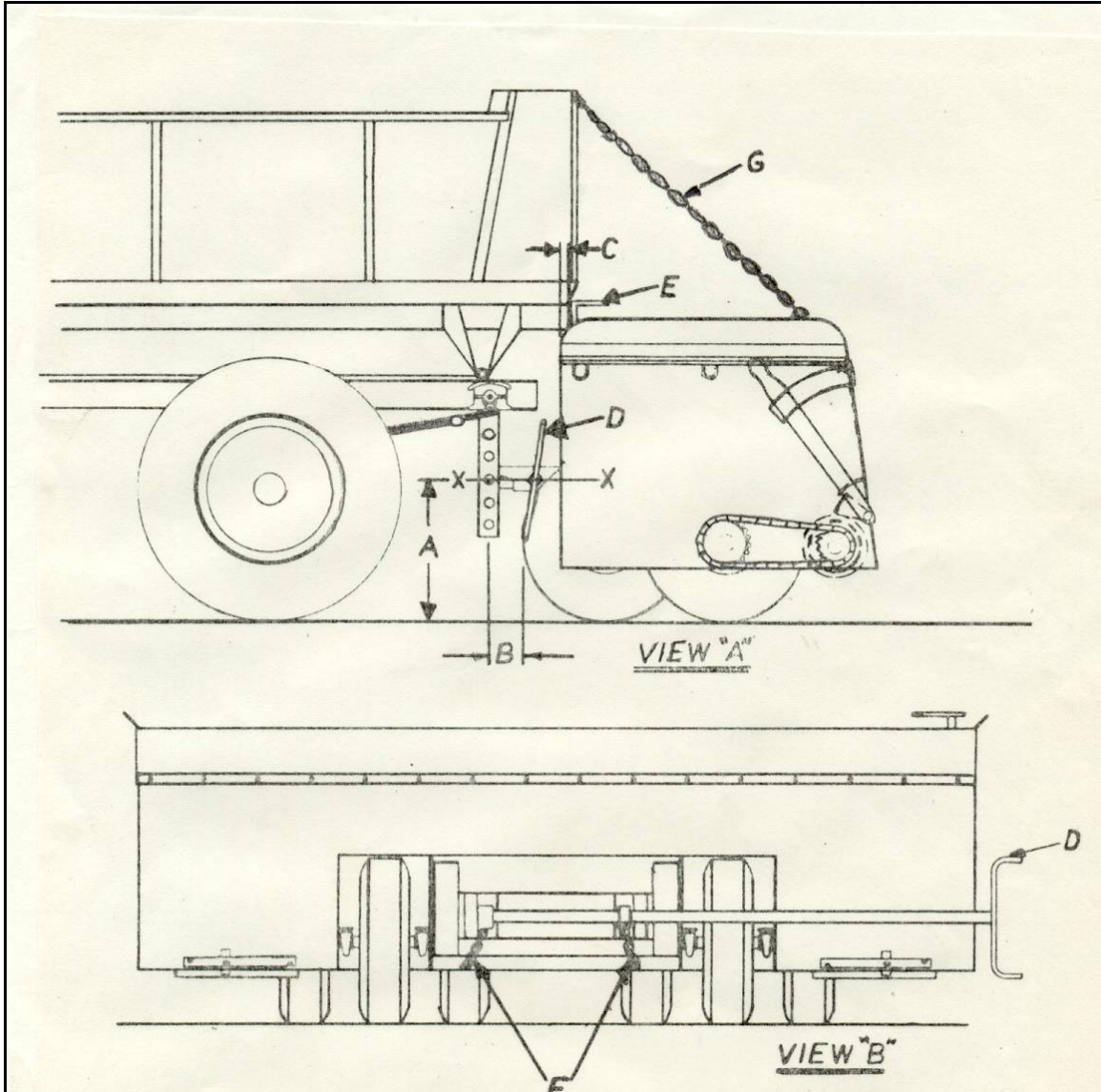
1. Check tyre pressures.
2. Fill ballast boxes with chips to obtain the minimum required weight of approx. 713kg. This weight must be obtained for balancing of the unit and also to ensure that there is enough weight on the traction wheels to power the transmission.

COUPLING SPREADER TO TIPPER TRUCK

1. Check spreader height in relation to truck hitch as shown on enclosed sketch line (x – x) View A. This will determine the location for the placing of the hitch bar in the correct height holes provided for on the truck hitch.
2. Back truck slowly towards spreader. Use spreader centre hitch control handle (item D) to open cam locks and for lifting center hitch to line up with the truck hitch bar. The center hitch is spring-loaded for automatic coupling. However, always check if fully engaged.
3. Check the distance between end of dump truck body and front of spreader hopper (dimension C) View A. Dimension C should be approx. 25 to 50mm. This dimension can be obtained by locating center hitch in different holes to the spreader hitch.
4. To disconnect chip spreader from tipper truck, turn control handle D until the catches on the center hitch are released from the truck hitch bar.
5. Do not travel at high speeds from one point to another, and take care on rough roads.

IMPORTANT NOTE:

The standard unit is 3657mm and the special unit is 4000mm. Always quote part numbers, descriptions and the serial number of the unit when ordering spares.

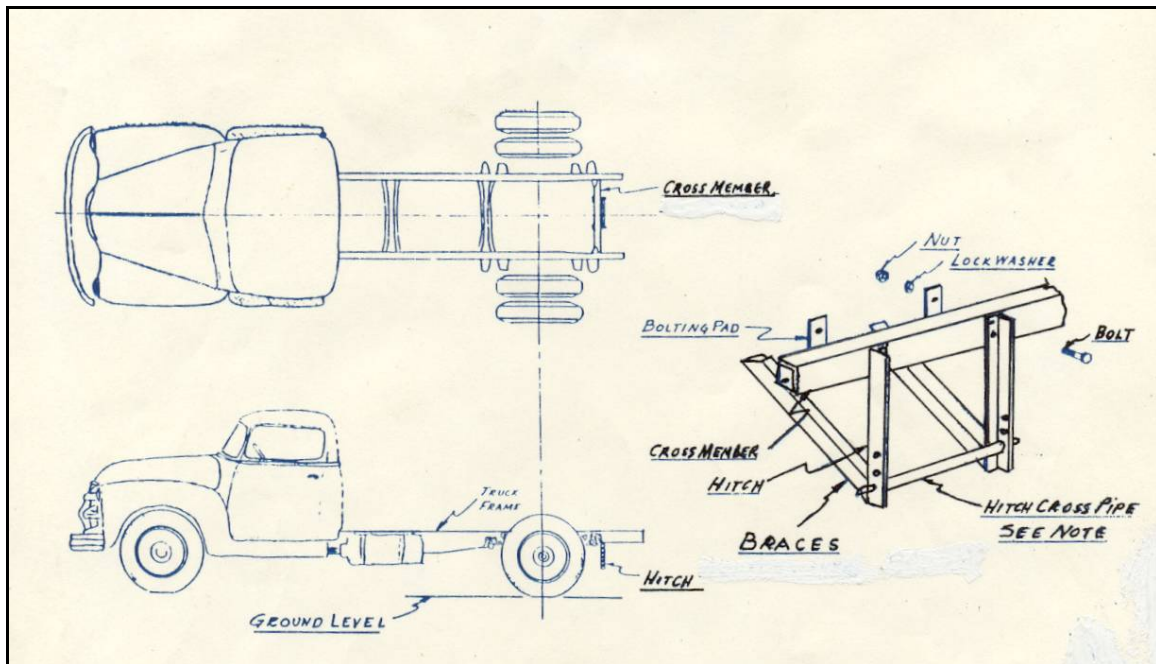


DIMENSION A – 355mm

DIMENSION B – 197MM (Minimum – 438mm)

DIMENSION C – 25 MM (Minimum – 51 mm)

MOUNTING INSTRUCTIONS FOR HITCH ASSEMBLY



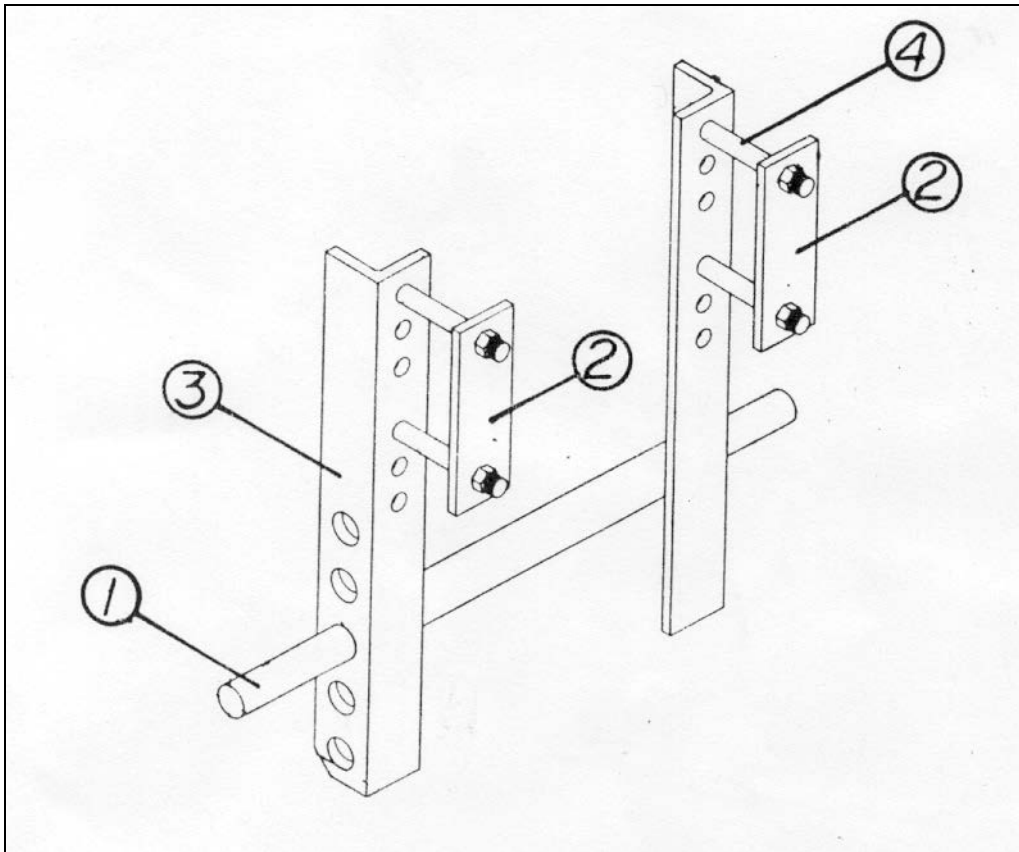
NOTE:

The distance from ground level to hitch cross pipe is 367mm.

Bolt truck hitch to rear cross member of truck frame using the two clamp plates and four 14mm bolts, nuts and lockwashers. Weld or bolt braces (not furnished) for support if needed to the hitch and truck frame.

TRUCK HITCH ASSEMBLY

ITEM	PART NO	DESCRIPTION
	9127	Truck hitch complete
1	9131	Drawbar shaft
2	9132	Mounting brackets
3	9134	Truck hitch frame
4	20191	Truck hitch bolts and nuts

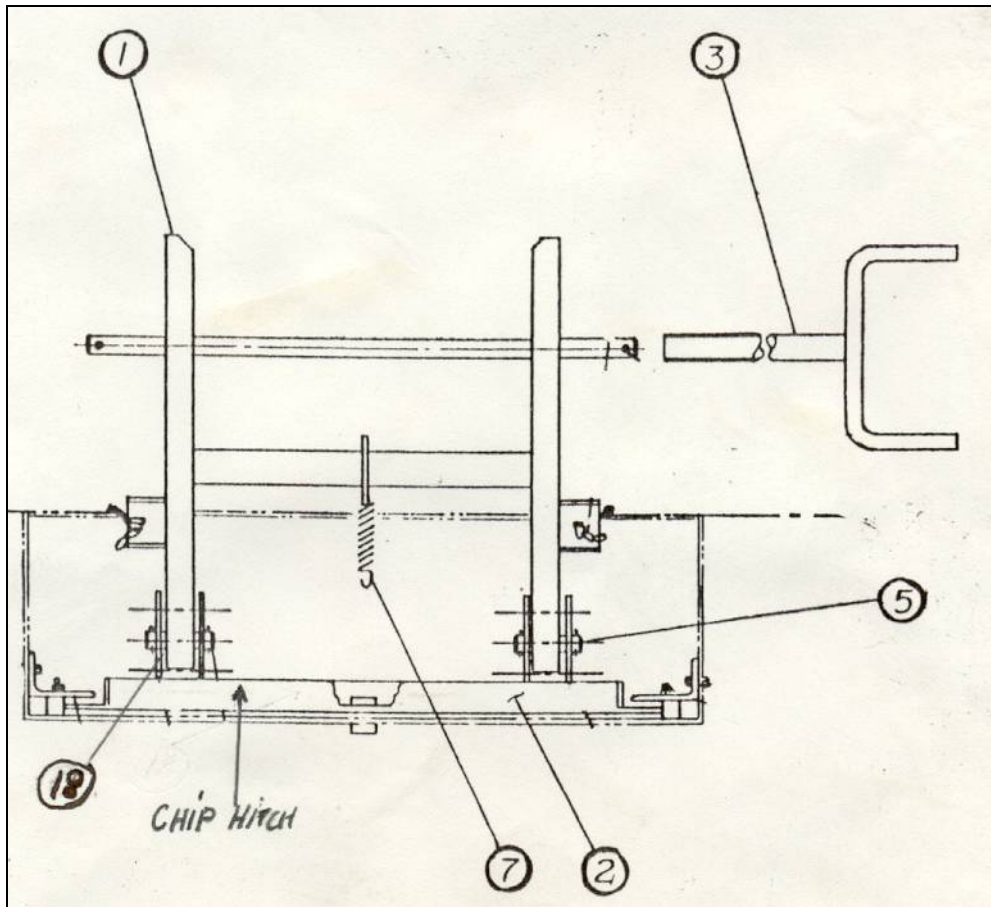


MOUNTING CENTRE HITCH

1. Mount center hitch (1) by attaching it to spreader hitch brackets (18) and lock with pins (5). NOTE: Brackets (18) have three adjustment holes to allow proper height coupling between spreader and tipper truck.
2. Connect center hitch spring (7) to spreader body (2).
3. Couple center hitch control handle (3) to center hitch shaft with bolt and nut. NOTE: The handle can be changed to the opposite side of the spreader if desired.

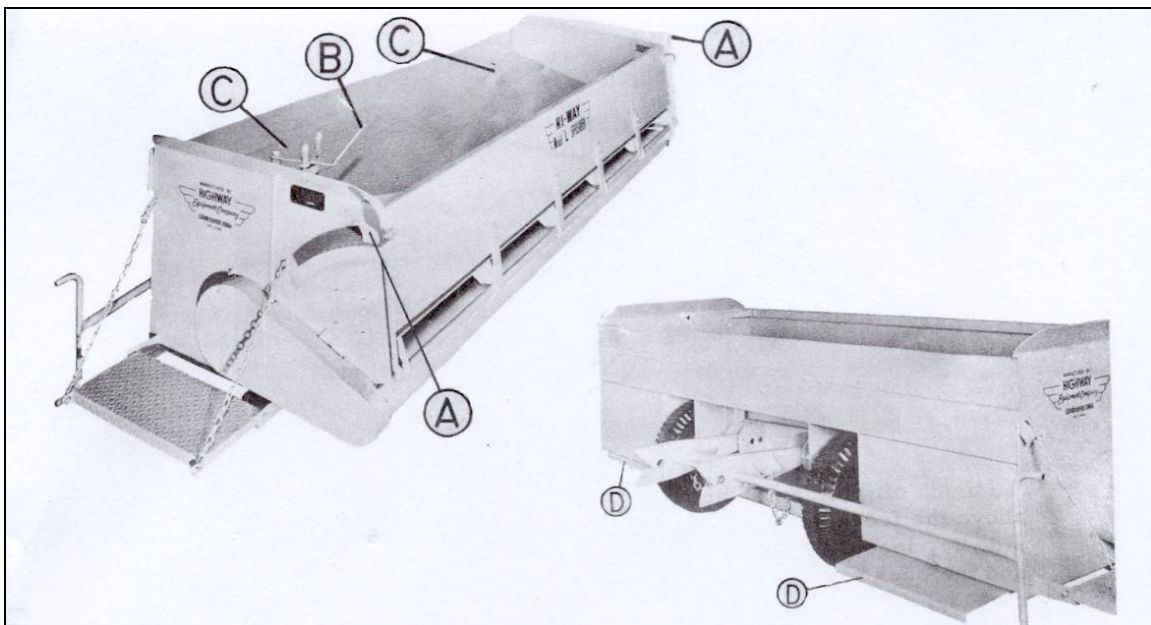
Your spreader is now operational.

TOP VIEW: SPREADER HITCH



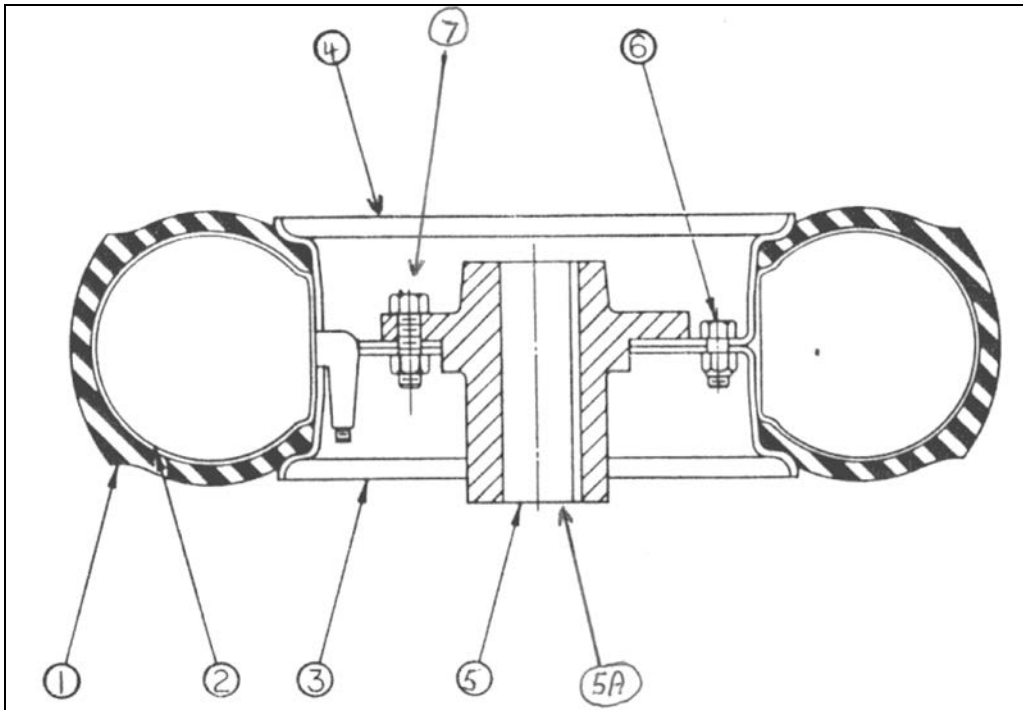
PREPARATION FOR SPREADING

1. Move spreader into position ready for spreading. Set chains on tipper truck tailgate for an opening of approx. 455mm. Release tailgate lock, raise dump body and fill spreader hopper.
2. Adjust feedgate opening to desired spreading thickness by means of feedgate adjusting levers (A) located on either side of the spreader. Ensure that feedgate setting is the same on both levers.
3. Engage transmission by means of gear selection lever (B) when lever is in the center position the gearbox will be in neutral. The notch towards the front of the spreader or nearest to the truck is reverse. The notch towards the rear of the spreader will engage the gearbox in the forward position. In case of a shifting error, the gear selector lever will automatically kick into the neutral position on movement of the spreader.
4. Remove ballast box bottom door (D) to dump ballast material after completion of spreading operation.
5. The ballast box top covers © must be removed for the filling of ballast box.



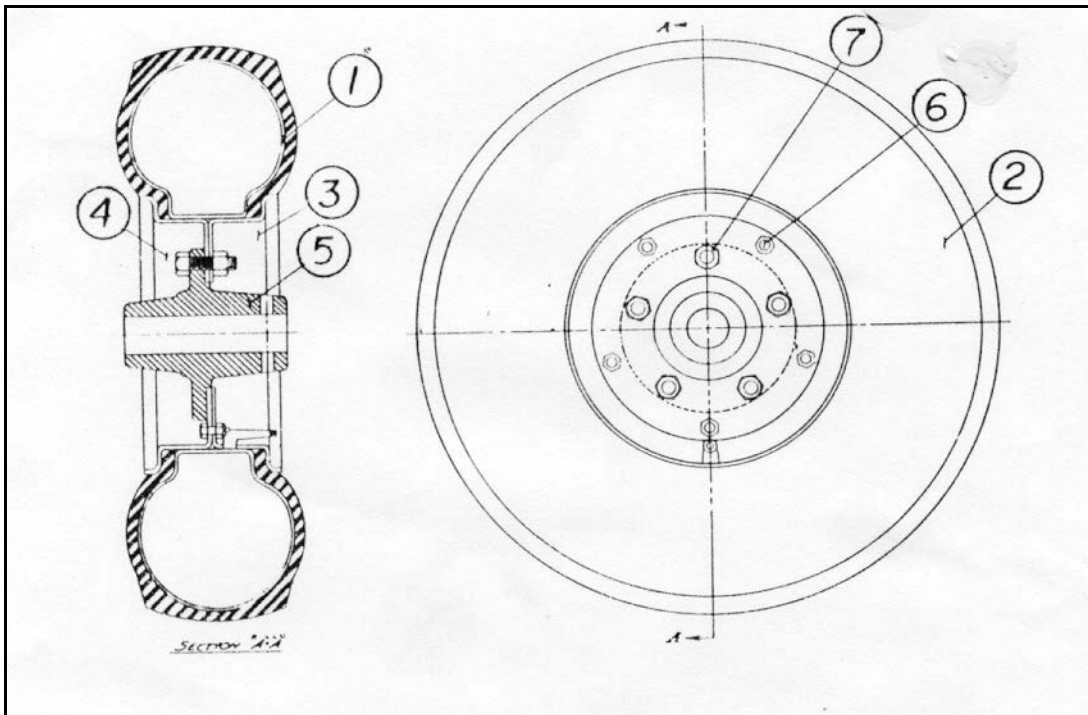
TRACTION WHEEL ASSEMBLY

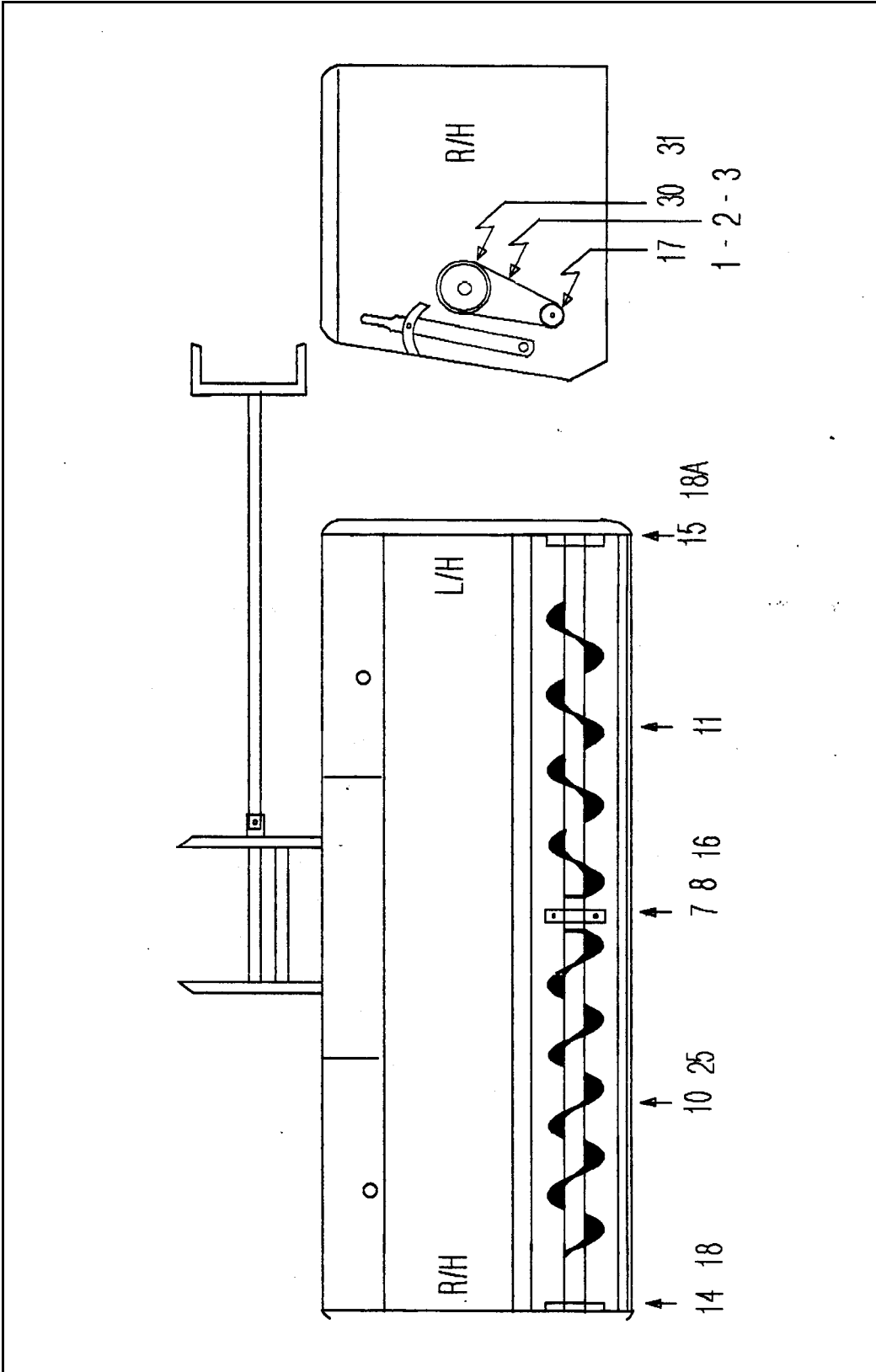
ITEM NO	PART NO	DESCRIPTION
1	6747	Tyre
2	6739	Tube and flap
3	6750	Wheel half without valve hole
4	6751	Wheel half with valve hole
5	9599	Wheel hub with key way
5A	29149	Wheel hub without key way
6	6751A	Bolt and nuts for rims
7	6751B	Bolt and nuts – rim to hub



IDLER WHEEL ASSEMBLY

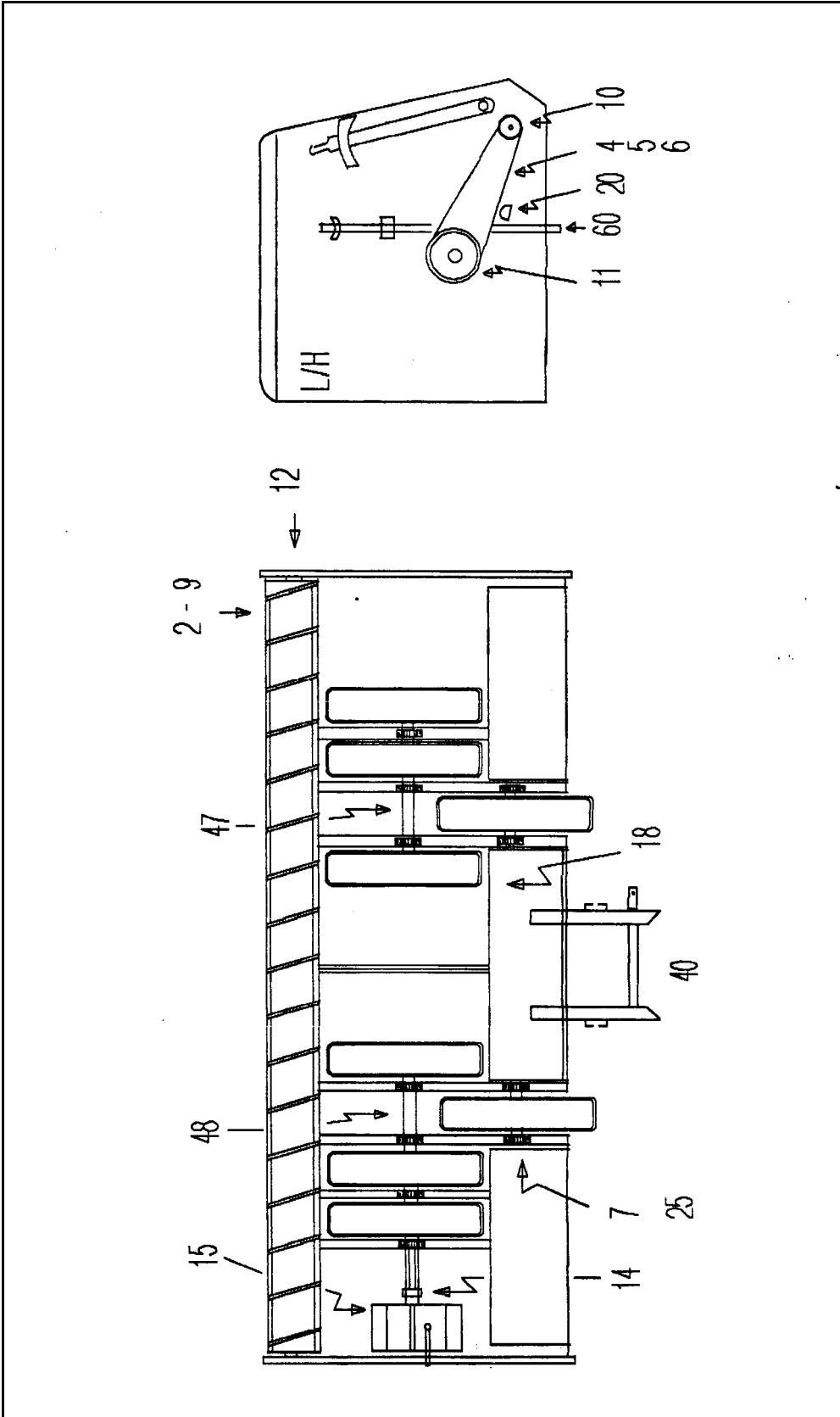
ITEM NO	PART NO	DESCRIPTION
1	6739	Tube
2	6747	Tyre
3	6750	Wheel half without valve hole
4	6751	Wheel half with valve hole
5	29149	Wheel hub with bolt hole
6	6751B	Bolt and nuts for rims
7	6751A	Bolt and nuts – rim to hub





AUGARS

ITEM NO	PART NO	DESCRIPTION
1	6173	Chain half link
2	6174	Chain master link
3	6176/39	Chain (feed roller to augar)
7	29095/6	Augar center bearing strap + support
8	6344	Augar center bearing
10	6709 6709C	Augar left hand – std unit Augar left hand – 4 meter unit
11	6710 6710A	Augar right hand – std unit Augar right hand – 4 meter unit
14	6850	Augar shaft – drive R/H
15	6851	Augar shaft – idler L/H
16	6852	Augar shaft – center
17	10771	Sprocket (feed roller)
18	6697	Bearing square (augar R/H)
18A	6697A	Bearing insert with flange (augar L/H)
29	29118	Chain cover R/H
30	22764	Sprocket (augar) 20 teeth
31	10310	Chain tighner

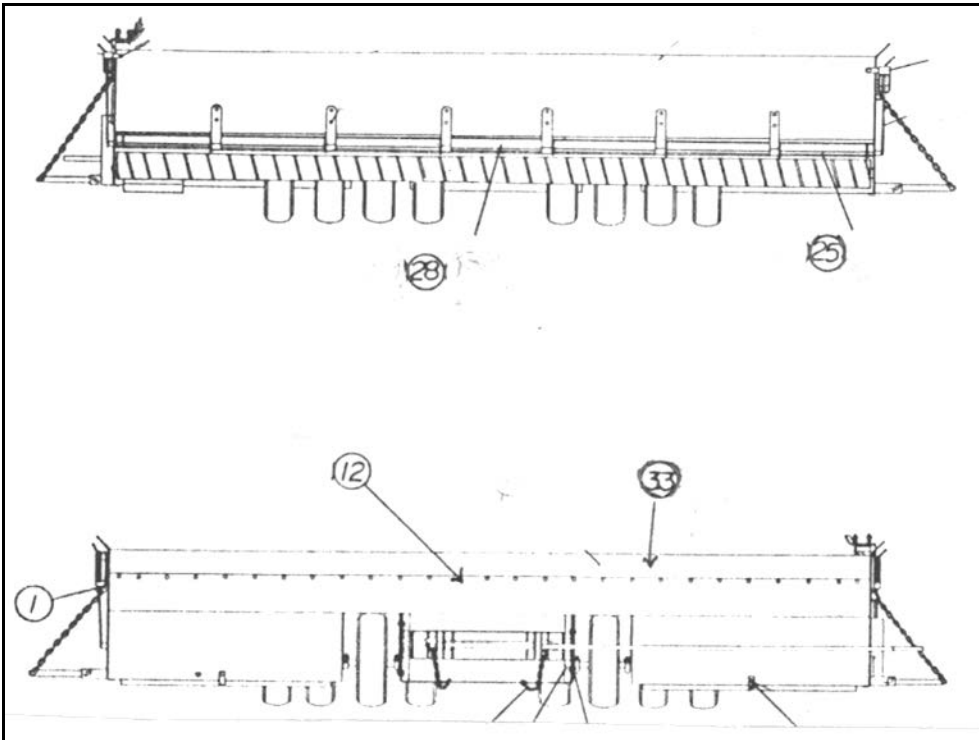


POWER TRAIN

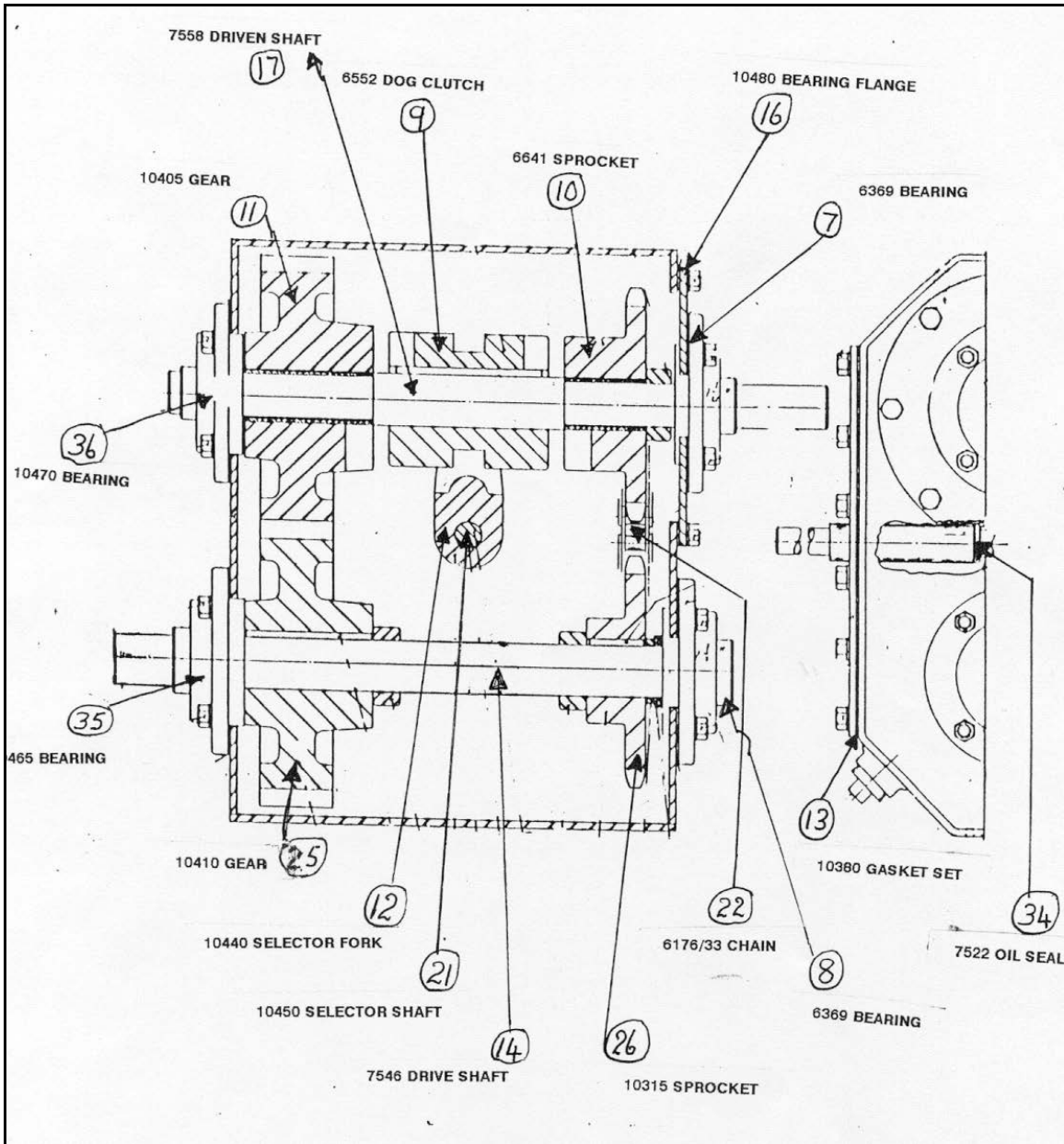
ITEM NO	PART NO	DESCRIPTION
2	4059	Key for feed roller
4	6173	Chain half link
5	6174	Chain master link
6	6176/59	Chain (gearbox to feed roller)
7	10280/5	Wheel bearing (6370A)
9	6622 6622A	Feed roller – std unit (see 4059) Feed roller – 4m unit (see 4059)
10	10771	Sprocket (feed roller)
11	10770	Sprocket (gearbox)
12	29139B 29139C	Bearing and ring for feed roller Bolts for bearing and ring
14	7549A	Chain coupling – 2 sprockets + chain (see 29088B)
15	7553	Gearbox complete
16	7586 7586A	Gear selector shaft Key for selector shaft
18	9660	Spreader hitch
20	10310	Chain tightner
21	12170	Operators platform L/H or R/H
23	12175	Operators platform chain (adjusting)
24	12176	Operators platform chain (fixed)
25	29081	Axle shaft idler (short) with bolt hole
40	29000	Centre hitch complete
41	29009	Feedgate lever
47	29087 29087A	Axle idler std unit – (long) with bolt holes Axle idler 4m unit – (long) with bolt holes
48	29088 29088A 29088B	Axle drive to g/box – std unit Axle drive to g/box – 4m unit Key set for drive axle (21444)
52	29104	Handle for center hitch
54	29114	Chain cover L/H (small)
60	29171	Gear change handle

MAIN BODY

ITEM NO	PART NO	DESCRIPTION
22	29079	Hopper belt retainer
25	29144	Shaft feedgate
28	29160	Feedgate weldment complete
33	29186	Hopper belt



TWO SPEED GEARBOX (part no 7553)



GENERAL SPECIFICATIONS FOR TOW-TYPE CHIPSPREADER

INSIDE BODY LENGTH	3660MM
HOPPER CAPACITY	1.15 CUBIC METER
TRANSMISSION	ONE RATIO FOR FORWARD AND REVERSE
FEED ROLLER	139.7 X 3651.3
FEEDGATE OPENING	0-88.9MM
WIDTH OF SPREADER PATTERN	3657.6MM
HOPPER LENGTH INSIDE	3657.6MM
SPREADER HEIGHT FRONT (GROUND TO BELT)	736MM
SPREADER HEIGHT FRONT (BELT INCLUDED)	836MM
SPREADER HEIGHT REAR (GROUND TO TOP OF PANEL)	876MM
OVER-ALL LENGTH (INCLUDING FEEDGATE AND LEVERS AND SPROCKETS)	3810MM
OVER-ALL WIDTH (INCLUDING HITCH AND FEEDGATE LEVERS)	1193.8MM
OVER-ALL HEIGHT (INCLUDING TYRES)	990.6MM
SPREADER WEIGHT	APPROX. 1134KG
SPREADER HITCH	AUTOMATIC SELF-COUPLING DRAWBAR TYPE
TRUCK HITCH	FULLY ADJUSTABLE
TRACTION TYRES	8 X 600 X 9 X 10 PLY (IMPLEMENT)